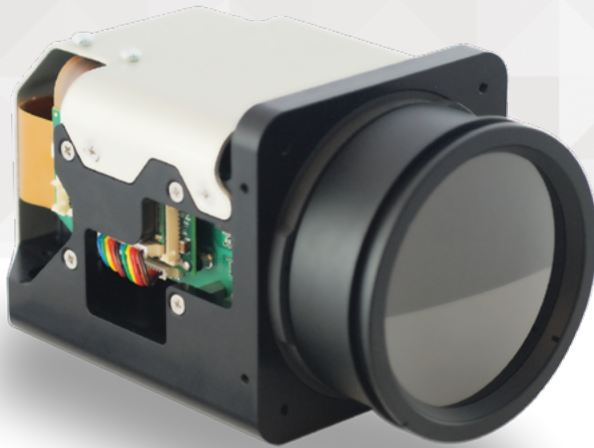


VINDEN CZ

CONTINUOUS ZOOM THERMAL CHASSIS CAMERA



SIERRA-OLYMPIC
Technologies Inc.



VINDEN CZ 640 X 480 OR 320 X 240 WITH CONTINUOUS ZOOM OPTIC AND ADVANCED THERMAL IMAGE PROCESSING FOR INTEGRATORS AND END-USERS

Vinden CZ is an affordable, effective thermal imaging camera that combines the best uncooled FPA technology available with an effective and efficient continuous zoom optic. With a 12X zoom factor for 640 x 480 and a 6X zoom factor for 320 x 240, Vinden CZ offers thermal imaging users an affordable and effective thermal zoom chassis camera.

Designed for integrators, the Vinden CZ offers IP-Video output with H.264 and MJPEG streams and Ethernet control. Simultaneous analog video output and 14-bit CameraLink digital output are also available. Optional control via serial com is also offered. For integrators, individual harness micro-connectors or 30-pin FFC offers integration flexibility. But most importantly, both the Vinden CZ 640 and Vinden CZ 320 offer an amazing 1.5 degree HFOV in full optical/digital zoom. A highly parfocal optic keeps objects in perfect focus through the zoom range. The camera supports parfocality at any object distance. An integrated auto-focus command eases user interface issues.

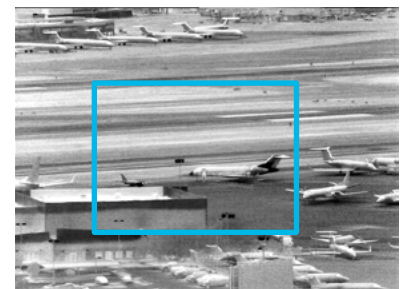
Vinden CZ is an ideal tool for Security/Surveillance integrators, or any thermal video user who requires advanced continuous zoom thermal imaging capabilities.



WIDE



MEDIUM



NARROW



NARROW WITH DIGITAL ZOOM

VINDEN CZ

CONTINUOUS ZOOM THERMAL CHASSIS CAMERA



SIERRA-OLYMPIC
Technologies Inc.

APPLICATIONS:

- + Systems integrators
- + Infrastructure security
- + Port and harbor security
- + Defense applications
- + Thermal PTZ systems

FEATURE SPECIFICATIONS:

Optical zoom	3x
Digital zoom	640 x 480: 4X . 320 x 240: 2X
Total zoom, 640 x 480	12x
Total zoom, 320 x 240	6x
HFOV, 640 x 480, Optical Zoom	5.9°-17.1°
HFOV, 320 x 240, Optical Zoom	3.0°-8.9°
HFOV w/ eZoom	1.5°
Sensors	VOx Uncooled Microbolometer
Available Resolutions	640 x 480 or 320 x 240
Pixel Pitch	17 µm
Wavelength	8-12 µm
Optical design	Continuous zoom LWIR
EFL	35-105 mm
F#	1.6
Front element coating	Hard-carbon
Analog output	NTSC or PAL
Digital output	14-bit CameraLink
IP Video output	MJPEG or H.264 compressed
IP Broadcast	Unicast / Multicast
Video output selection	All simultaneous
Ethernet protocol	UDP

CAMERA FEATURES:

- + Continuous zoom
- + Analog, digital, IP-video outputs
- + Multiple HDR image display modes
- + Scene-based auto-focus
- + Tightly integrated camera / lens / processor design
- + Ethernet connectivity
- + On board streaming storage
- + Non-ITAR design

System control	Serial or Ethernet
On board video storage	Up to 32 GB micro SD
Hardware interfaces	3X Molex Picoblade and 30-pin x 0.5mm FFC
Optional interface	Rear-mounted connector board
Image processing	Brightness/contrast, CLAHE, LAP, Auto histogram
Image de-noise	Spatial and temporal
Process mixing	Alpha mixing of Histogram w/LAP or CLAHE
Palettes	Monochrome, Color
On-board NUC	Via internal shutter or external no-shutter
Operating Temperature Range	-20 to +67C
Shock	Operating: 10G. Non-operating: 70G
Certification	RoHS
Power	12 VDC, 4 Watts max
Weight	VN320 = 852gm VN640 = 859gm

Specifications and descriptions subject to change without notice.

